

# Winnebago County 2021-2030 Land & Water Resource Management Plan



Land and Water Conservation Department  
625 E County Road Y, Suite 100  
Oshkosh, WI 54901

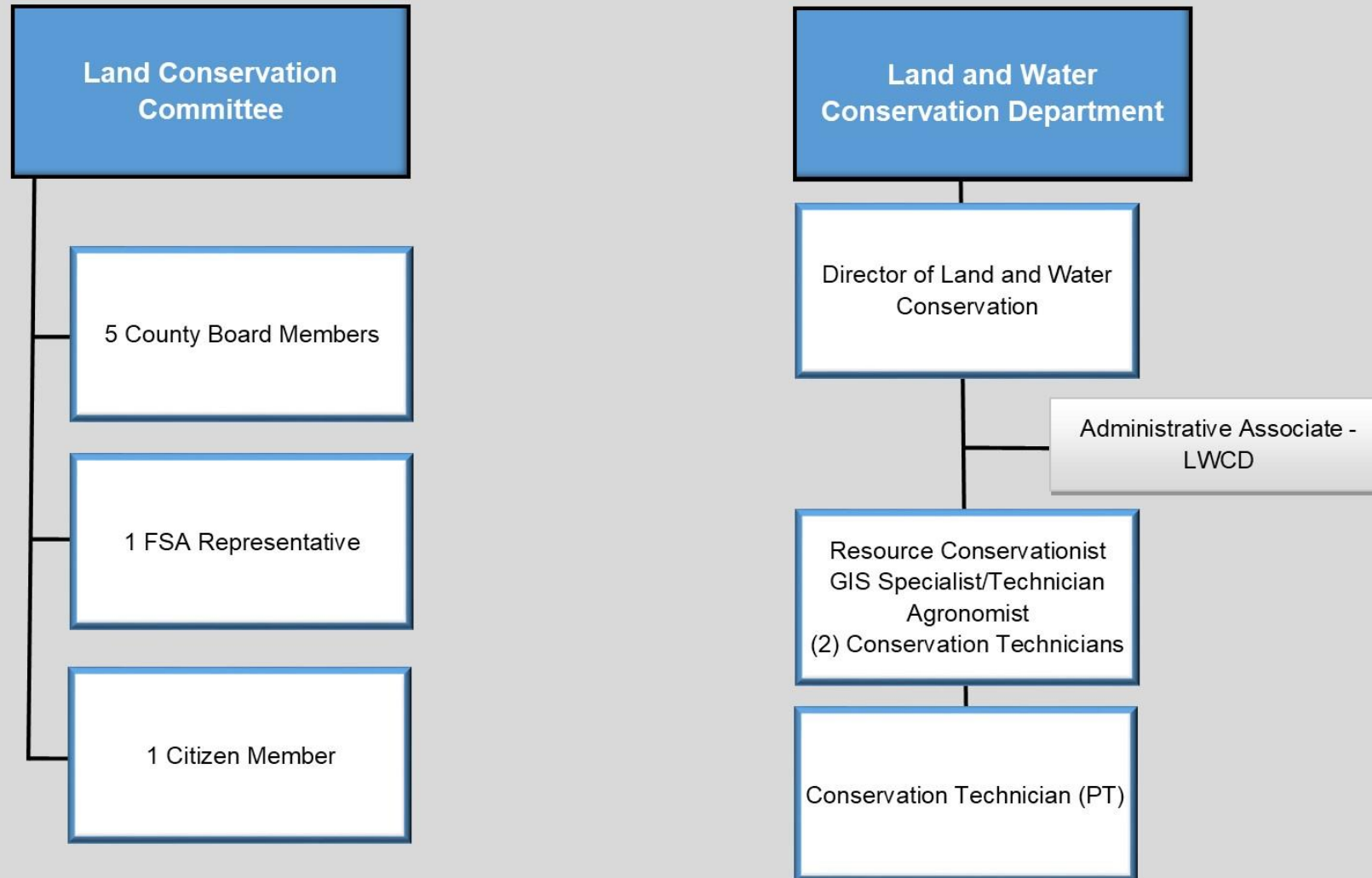


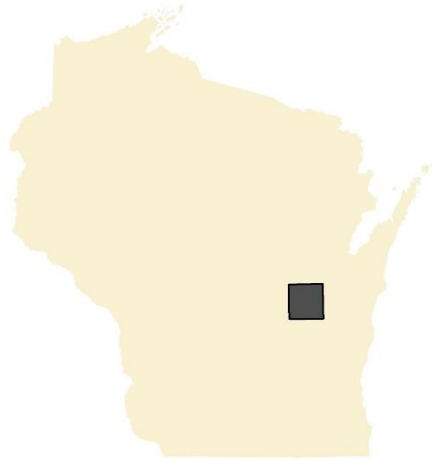
Presented by: Chad Casper, Acting Director,  
Winnebago County LWCD

Chuck Farrey, Winnebago County LCC Chair



**Winnebago County  
Land Conservation Committee &  
Land and Water Conservation Staff**



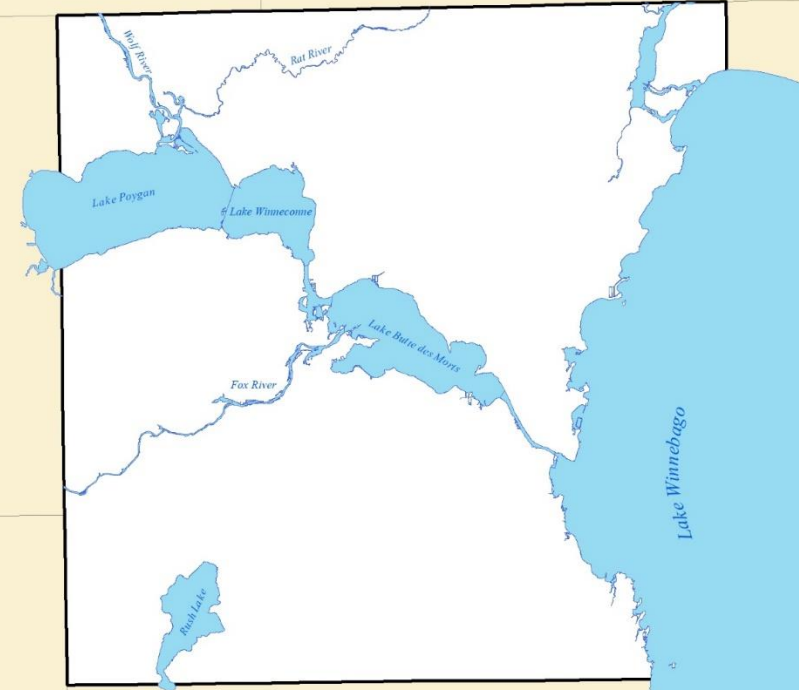


- Winnebago County covers approximately 579 square miles with 143 square miles of water and 436 square miles of land area.
- Winnebago County has approximately 151,000 acres of agriculture lands.
- Populations are concentrated in the cities of Menasha, Neenah, Omro, Oshkosh and the villages of Winneconne and Fox Crossing. Pop. 171,020
- The county has 16 civil townships.



## Surface Water

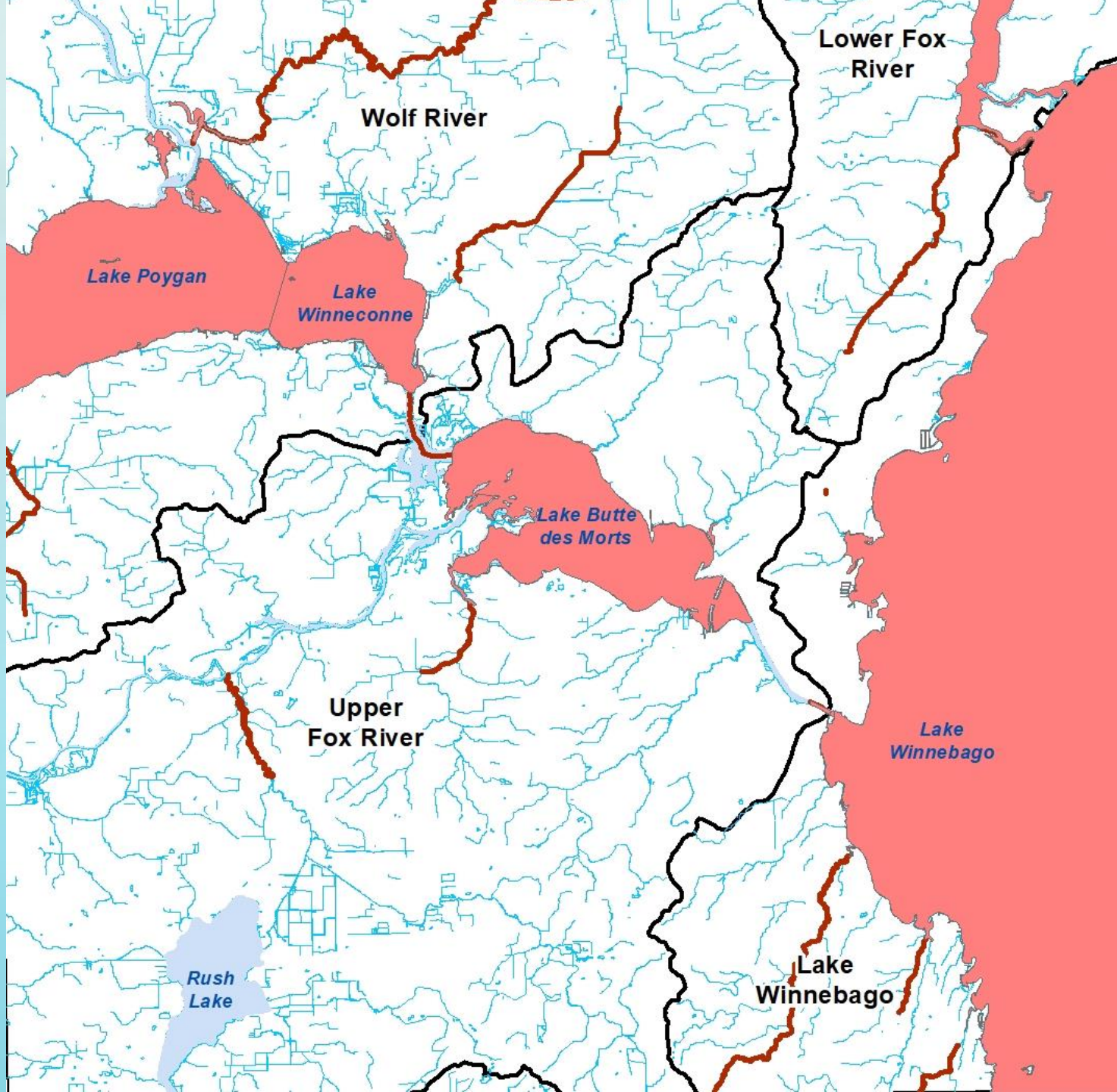
- Winnebago County has 53,271 acres of wetlands.
- Winnebago County has over 91,000 acres of surface water.
- This is the largest area of inland surface water of any county in Wisconsin.
- Winnebago System is located within 75 miles of over 2 million people.
- Receives heavy recreational use for fishing, boating, swimming, hunting and trapping.
- Lake Winnebago provides drinking water to over 200,000 people.
- All of Winnebago County is located in the Fox-Wolf Basin.



# 303 (d) Impaired Waters

- Total Phosphorus
- Suspended Solids
- Excessive algae growth

Agriculture  
Urban land uses  
Point-sources  
Internal loading  
Artificially high water levels

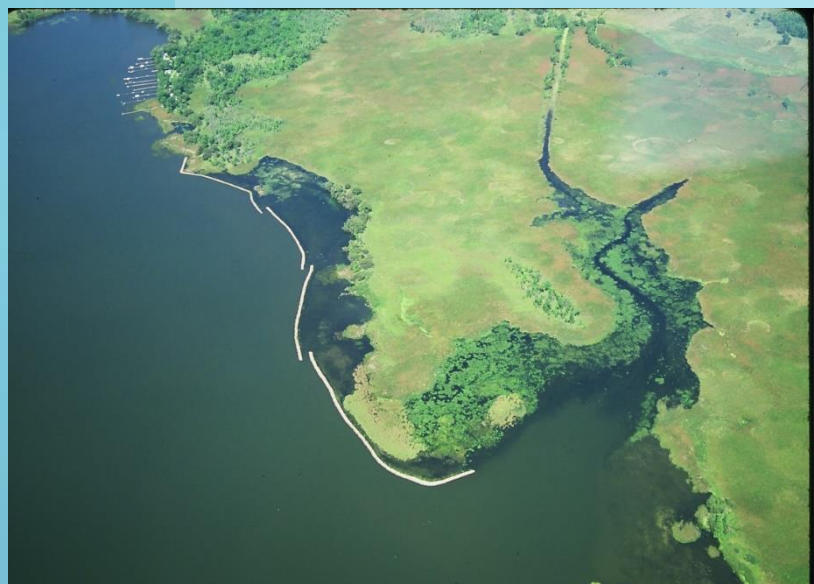




# Winnebago Waterways Program

- Regional coordination of ongoing adaptive management of the Winnebago Waterways region.
- Funded by three counties and supported by numerous partners including area organizations, residents, local governments, lake users and area businesses.
- Recently completed the Winnebago Waterways Lake Management Plan and are moving into implementation.



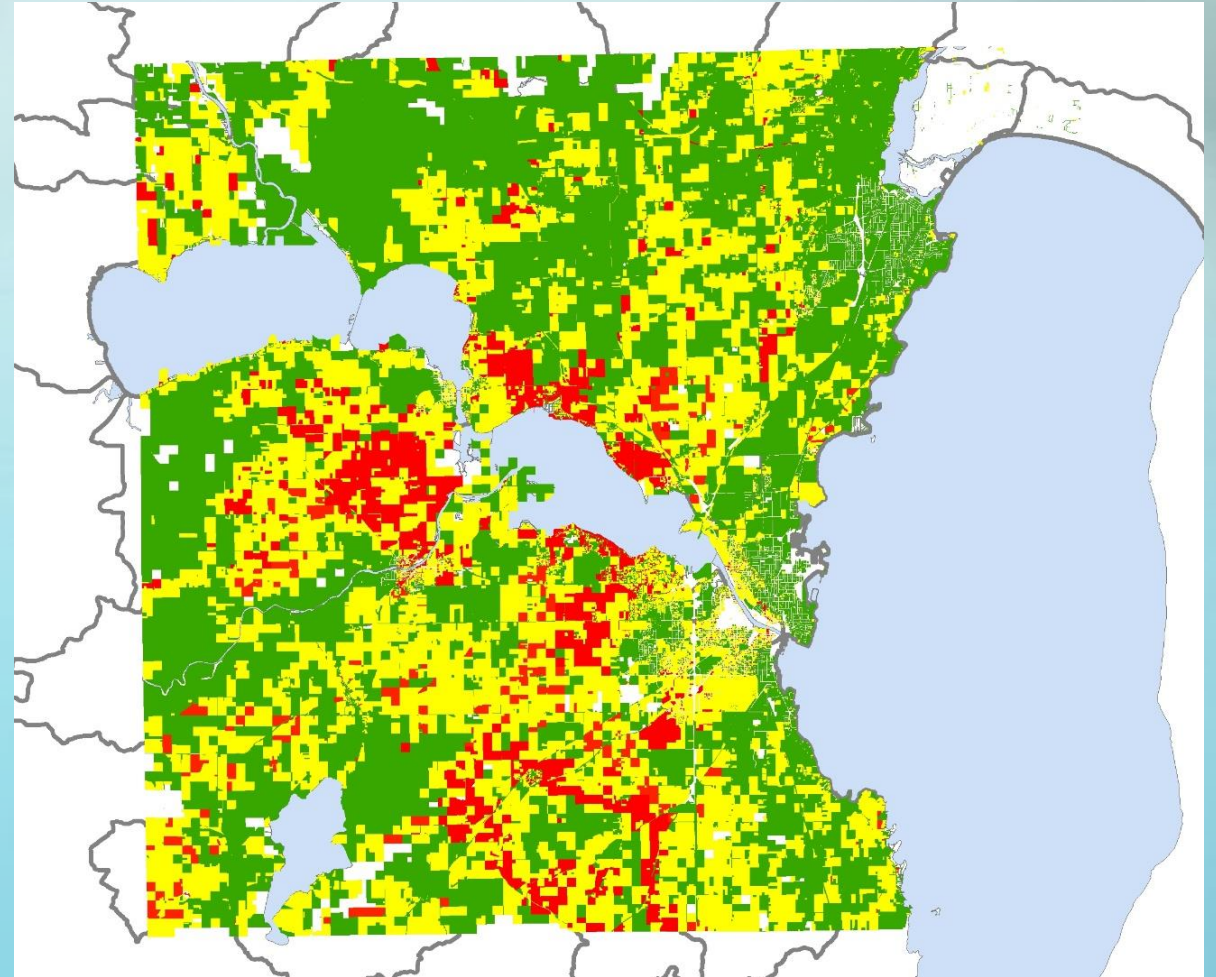


# “Healthy Land, Healthy Water” Nine-Key Element Watershed Plan



# Erosion Vulnerability Assessment for Agricultural Lands (EVAAL)

- A GIS-based tool created by WI-DNR for assisting watershed managers to prioritize areas that may be vulnerable to erosion.
- The tool is run on HUC-12 watersheds to generate a map of high risk lands.
- Landowner's are then contacted to provide information on potential conservation practices to implement.





# Agricultural Performance Standards





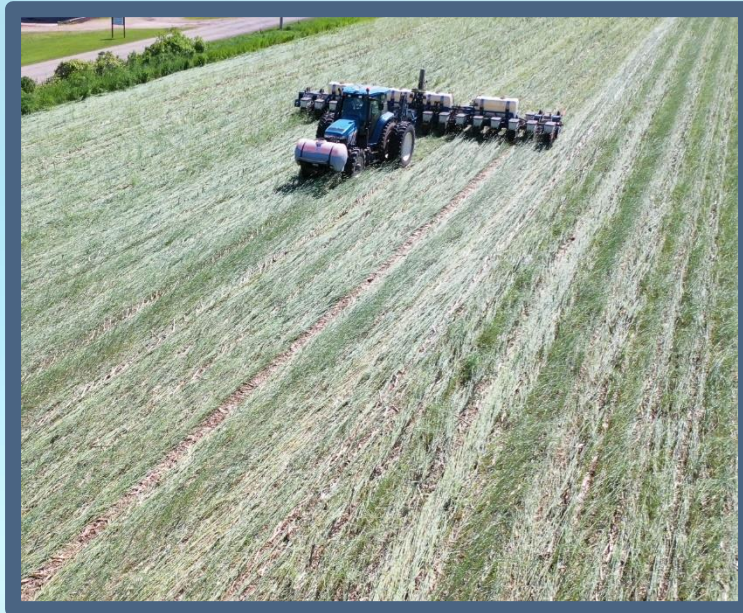
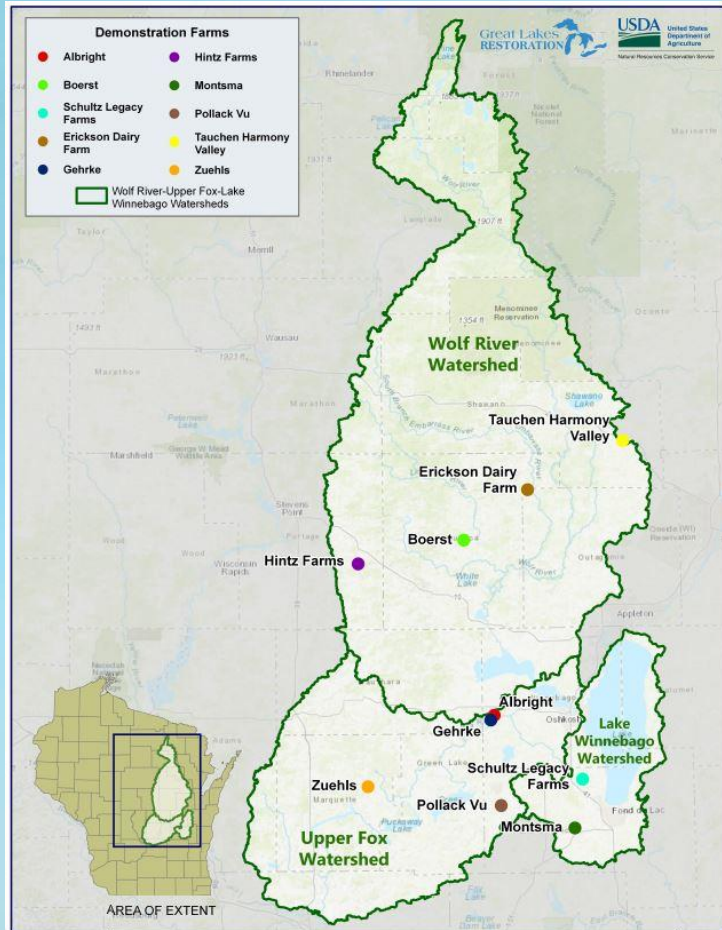
# Farmland Preservation Program

- Steering committee and county zoning preferred voluntary participation by landowners
- Winnebago County Farm Preservation Plan was not certified by DATCP due to the voluntary participation. ATCP 49.12(1)c
- The Town of Nepeuskun has received certification of their own Farmland Preservation Plan and continue with FPP.
- The Nepeuskun acres (3,623 acres) currently available for participation in FPP are certified compliant with NR 151.
- Nepeuskun will be re-zoning land from A-2 to A-1 in the near future to comply with their certification. Those acres will be certified at that time.

# Upper Fox-Wolf Demonstration Farms Network



- The Winnebago County LWCD along with seven other counties began the regional effort to educate producers on new and innovative strategies to reduce soil erosion, reduce phosphorus loading to surface water, improve proper application and utilization of livestock waste, increase soil water holding capacity and improve overall soil health.



- Education is being provided by producers participating as Demonstration Farms in the Upper Fox and Wolf River Watersheds.
- These conservation-minded producers give guidance and share their experiences with fellow farmers to help promote sustainable and profitable farming methods.
- Winnebago County has two operations participating as Demonstration Farms.

# Winnebago County LWCD - Soil Health Challenge Program

- “The Soil Health Challenge (SHC)” program is designed to reward participants that are willing to work with the Winnebago County Land and Water Conservation Department by committing a portion of their cropland to no-till farming and cover crops.
- The purpose of the SHC is for the farmer to learn how to implement soil health on their own farm and educate other producers on the challenges and benefits they encountered along the way.



## Citizen Advisory Committee/Cooperating Agencies & Advisors/Town Chair Advisory Committee

- Cash Crop Farmers
- Livestock Farmers
- Agronomists
- Winnebago County Holstein Breeders Association
- Winnebago County Farm Bureau
- Land Conservation Committee
- Butte des Morts Conservation Club
- Lake Poygan Sportsmens Club
- Town Chairs (16)
- Fox-Wolf Watershed Alliance
- Agricultural Loan Officer
- UW-Madison, Division of Extension - (3 representatives)
- WDNR – (9 representatives)
- WDATCP – (4 representatives)
- USDA/NRCS – (3 representatives)
- U.S. Fish & Wildlife Service
- East Central Wisconsin Regional Planning Commission



Land and Water Conservation Department  
625 E County Road Y, Suite 100  
Oshkosh, WI 54901



WINNEBAGO COUNTY  
2021—2030

LAND & WATER RESOURCE  
MANAGEMENT PLAN



Thank You!  
Questions?