

# Pierce County Land and Water Resource Management Plan

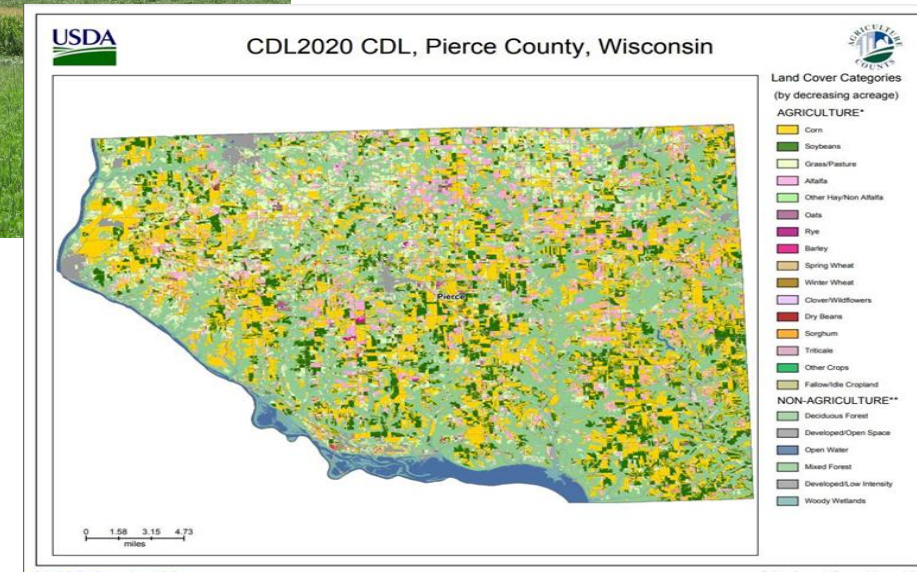
2022 - 2031

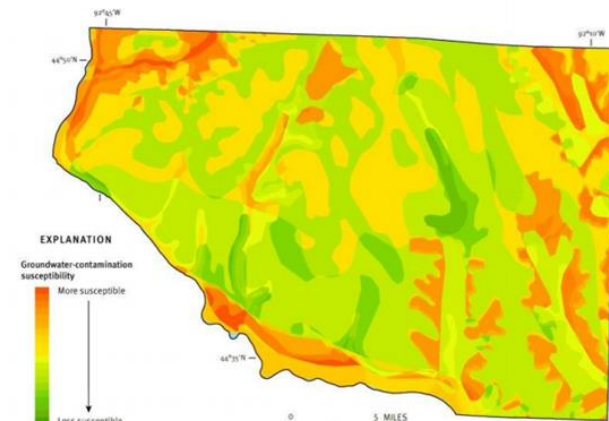
Pierce County Land Conservation Committee & Department

# Pierce County



- Total land area 378,671 acres
- Farmland 219,369 acres
- 176,433 is actively cropped
- 106,791 acres of Woodlands
- Population 42,754
- Livestock 46,000
- 109 Miles of Class I Trout Streams (47.7 miles in 2002)





## *Goal 1: Water Quality- Improve & protect surface and groundwater quality*

- Targeted watershed approaches
- Protect current surface water quality conditions
- Identify critical source areas
- Promote awareness of karst features and their risks to groundwater
- Monitoring





*Goal II: Agricultural Land & Soils-  
Encourage the preservation of prime  
agricultural lands & improve the  
health & productivity of agricultural  
soils*



- Encourage production methods that reduce topsoil losses, increase infiltration and soil productivity
- Assist with conservation practice implementation
- Promote the preservation of farmland
- Promote diversity of agriculture production
- Producer-led efforts



*Goal III: Wildlife,  
Woodlands, &  
Environmentally  
Sensitive Habitats*

- Identify and enhance important wildlife habitat
- Promote awareness of invasive species
- Restoration of woodlands on sensitive lands
- Enhance cold water stream habitat



Photo credit: Pierce County Sheriff's Office June 2020


*Goal IV: Climate Variability & Rainfall Intensity- Address the effects of changing weather patterns on land & water resources*

- Include climate variability in long range resource plans
- Promote carbon sequestration and greenhouse gas reduction
- Consider rainfall intensity trends when planning



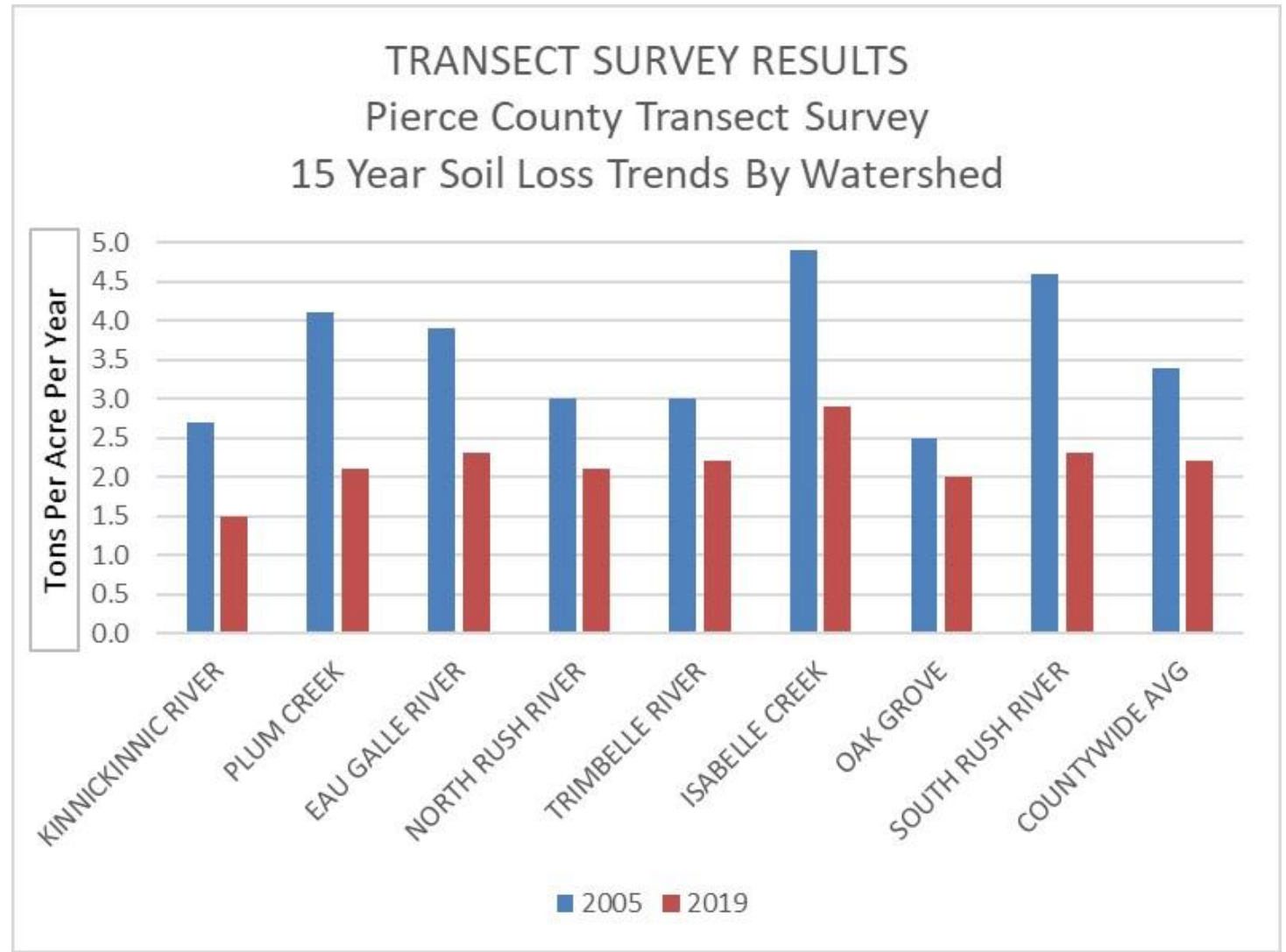
## Accomplishments 2011-2020

---

- 1 agri-chemical handling facility
  - 4 waste storage facilities
  - 8414 acres of cover crop (2019)
  - 61.17 acres of critical area treatment
  - 49 wells decommissioned
  - 22059 acres under nutrient management (2019)
  - 11 manure storage closures
  - 7 diversions
  - 926 ft of livestock fencing
  - 4 acres of filter strips
  - 119 grade stabilization structures
  - 437.3 acres of grassed waterways
  - 19 sinkhole treatments
  - 2269 ft of access road
  - 2243 ft of roof runoff structure
  - 500 ft of trails and walkways
  - 1521 ft of stream crossings
  - 5597 ft of streambank stabilization
  - 24080 ft of subsurface drain
  - 13 livestock water facilities
- 

# Accomplishments - Positive Trends

- Estimated annual soil losses reduced in all watersheds
- Miles of class I streams doubled
- Agricultural Enterprise Area established
- Farmer-Led Watershed Council boosts interest
- Targeted watershed approach attracting many producers







United States Department of Agriculture  
Natural Resources Conservation Service



KINNICKINNIC  
River Land Trust



Wisconsin  
Farmers  
Union

# Questions?

Rod Webb  
Land Conservation Director  
rodney.webb@co.pierce.wi.us  
(715)273-6763

Jerry Kosin  
Land Conservation Committee Chair  
jerry.kosin@co.pierce.wi.us

